



HP ErgoSoft RIP Color Edition

Update to HP Ergosoft RIP Color Edition (V16)



HP Ergosoft RIP Color Edition to (V16) Updating Procedure

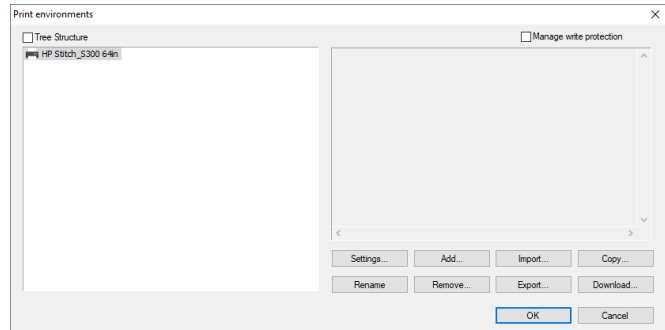
Updating from an earlier version of a RIP to a more recent one can seem like a daunting task, but with the following steps you can easily take over your printer configurations and settings from HP Ergosoft RIP Color Edition to HP Ergosoft RIP Color Edition (V16).

It is recommended to do the following steps in order, but you can skip the steps that don't apply to you.

Exporting Print Environments from HP Ergosoft RIP Color Edition

First, open your installation of HP Ergosoft RIP Color Edition and open the *Print Environments...* Dialog (*Tools > Print Environments*).

Select the *Print Environments* you want to take over. You can select multiple *Print Environments* by holding Ctrl or Shift, then click the *Export* Button.



Select a Save path and confirm. If you selected one Print Environment, you'll get a *.PrEnv* file. If you selected multiple, you'll get a *.PrEnvPck* file bundling your Print Environments.

If you also want to take over *Cut Environments*, repeat this process for the *Cut Environments* (*Tools > Cut Environments...*).

Next, install HP Ergosoft RIP Color Edition (V16) on your system. If you already have it installed, go directly to the next step. If you need help setting up HP Ergosoft RIP Color Edition (V16), check the [HP Ergosoft RIP Color Edition \(V16\) Installation Guide](#).

Leave HP Ergosoft RIP Color Edition (V16) closed for now, as we first want to import some files.



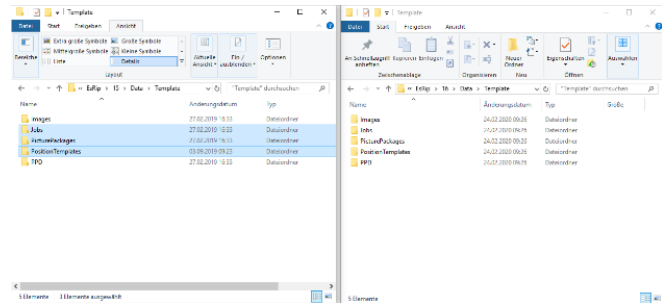
Importing Saved Jobs, Picture Packages, Position Templates

If you have created *Position Templates* in HP Ergosoft RIP Color Edition that you would like to keep using in (V16), you can take over the relevant files by directly copying them from the User Data folder.

By default you can find the User Data folder in *C:\Users\Public\Documents\EsRip* with subfolders for 15 (HP Ergosoft RIP Color Edition) and 16 (HP Ergosoft RIP Color Edition (V16)).

To take over saved Jobs, Picture Packages and Position Templates, go to the folder *15/Data/Template* and copy the subfolders *Jobs*, *PicturePackages* and *PositionTemplates* to the corresponding folder in *16/Data*.

Since this is a new installation, you can always integrate/overwrite the existing folder when prompted.



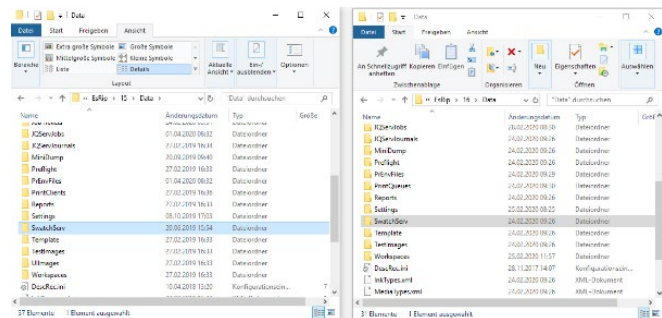
Importing Swatchbooks

If you have created *Swatchbooks* in HP Ergosoft RIP Color Edition that you would like to keep using in (V16), you can take over the relevant files by directly copying them from the User Data folder.

By default you can find the User Data folder in *C:\Users\Public\Documents\EsRip* with subfolders for 15 (HP Ergosoft RIP Color Edition) and 16 (HP Ergosoft RIP Color Edition (V16)).

To take over Swatchbooks, go to the folder *15/Data/* and copy the subfolder *SwatchServ* to the corresponding folder in *16/Data*.

Since this is a new installation, you can always integrate/overwrite the existing folder when prompted.



Importing Input Profiles, Exported Densities, Color Profiles, Named Color Profiles and ColorQPC Sessions

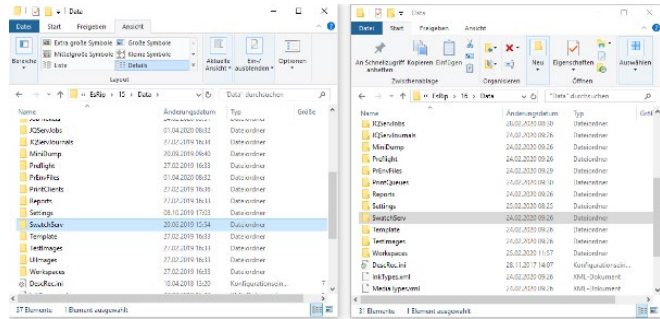
If you used your own input profiles in HP Ergosoft RIP Color Edition that you would like to keep using in (V16), or want to keep external densities, profiles and/or saved *ColorQPC* Sessions you can take over the relevant files by directly copying them from the User Data folder.

By default you can find the User Data folder in *C:\Users\Public\Documents\EsRip* with subfolders for 15 (HP Ergosoft RIP Color Edition) and 16 (HP Ergosoft RIP Color Edition (V16)).



To take over input profiles and other color relevant files, copy the *Color* folder from *15/Data/* to the corresponding folder in *16/Data*.

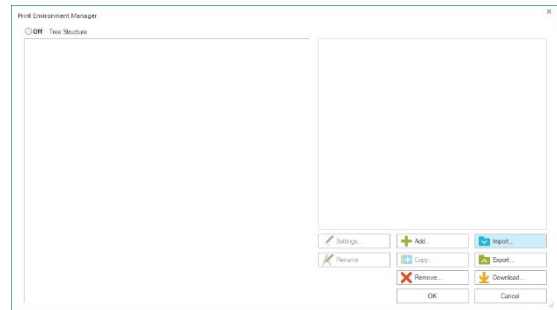
Since this is a new installation, you can always integrate/overwrite the existing folder when prompted.



Importing Print Environments & Cut Environments

Once HP Ergosoft RIP Color Edition (V16) is installed and we have the important User Data files copied, we can start HP Ergosoft RIP Color Edition (V16) and import the *Print/Cut Environments*.

To import your *Print Environments*, open HP Ergosoft RIP Color Edition (V16) and start the *Print Environments Manager (Tools > Print Environment Manager)*.



Click the *Import*-button and select the *PrEnv* or *PrEnvPck* file you exported before, then confirm to import your *Print Environment*.

Repeat this process for the *Cut Environments* by going to the *Cut Environment Manager (Tools > Cut Environment Manager)* and selecting your exported *Cut Environments*.

Note that this will not import the port configuration for your *Print & Cut Environments*. After importing, you'll need to open the settings of the respective *Print/Cut Environment* and configure a *PrintQueue* and *Output Port*. For more information on how to do this, see the [HP Ergosoft RIP Color Edition \(V16\) Installation Guide](#).

Adjusting Presets

Unfortunately, the presets from the earlier version cannot be taken over directly as the structure of presets has changed.

If you had Presets configured that you would like to take over, keep HP Ergosoft RIP Color Edition (V16) open and start HP Ergosoft RIP Color Edition as well. Start *Tools > Edit Presets* in both versions.

You can now adjust each of the presets in (V16) to match the earlier ones.

